



REMOTE LENSES

USED IN CONJUNCTION WITH SERIES 9000 SENSORS THESE LENSES MEET ALL INSTALLATION REQUIREMENTS

Robust lenses for mounting close to hot product where ambient temperatures are subject to extreme variation. Impervious to water and steam and hence well suited for extremely harsh environments.

Used in conjunction with flexible armoured optic lead, these lenses provide a high level of optical accuracy by allowing the selection of the ideal lens arrangement for the installation. There are four styles of lenses available.

1. PRECISION SLIT LENS

½° x 25° FIELD OF VIEW

UTILISING LINEARISED OPTIC LEAD.

Incorporating the following features:

- Gunsight alignment
- Unique built-in air purge/cooling facility
- Internal 5° & 10° vertical shuttering option
- Slide flange mounting
- Ambient rating of 160°C

Ideal for length measurement of hot strip and plate.

2. STAINLESS SLIT LENS

2° x 15° FIELD OF VIEW

Incorporating the following features:

- Separate air purged columnator tube option
- Ambient rating of 180°C or 400°C
- Slit field of view at low cost

Highly suitable where rod & bar bounces about the centre line.

3. STAINLESS TUBULAR LENSES

1°, 2°, 4° OR 7° SPOT FIELD OF VIEW

Incorporating the following features:

- Standard 25mm diameter housing for all lenses
- Detached air purge facility via mounting nozzle
- Ambient rating of 180°C or 400°C

Inexpensive lenses that are straightforward to install and extremely rugged construction. Ideal for product tracking.

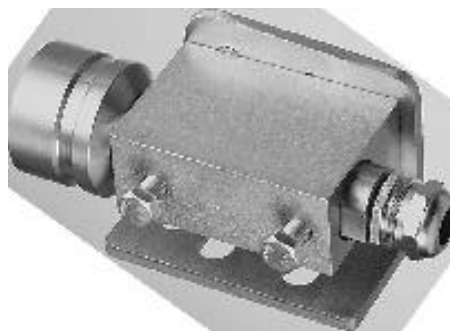
4. HIGH TEMPERATURE QUARTZ ROD SHIELDED 1° SPOT FIELD OF VIEW

Purpose built for mounting in exceptionally high ambient site adjacent to furnaces or hot slab. Used in conjunction with 400°C rated optic lead, withstands 1200°C radiant heat. Lens contamination minimised by screw-on nozzle with or without air purge facility.

Precision ½° x 25° Slit Lens. Type FRO/2



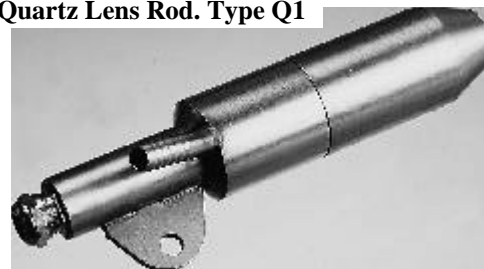
Stainless 2° x 15° Slit Lens. Type SR2



Purged Tubular Spot Lens Mount



Quartz Lens Rod. Type Q1



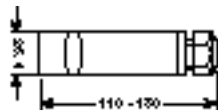
LENS SELECTION GUIDE:

Lens Description	F1/Q1	F2	F4	F7	FR0	FR1	FR2	SR2
Field of View	1°	2°	4°	7°	½° x 5°	½° x 10°	½° x 25°	2° x 15°
Scanned Area (mm) at 1 metre	20	40	80	120	10 x 100	10 x 200	10 x 500	20 x 250

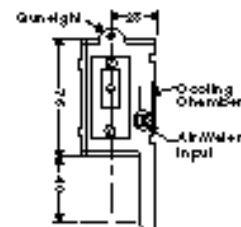
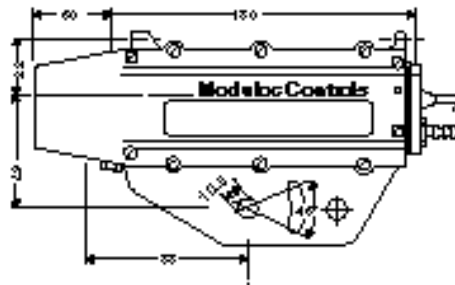
LENS DIMENSIONS:

Precision FR Slit Lens

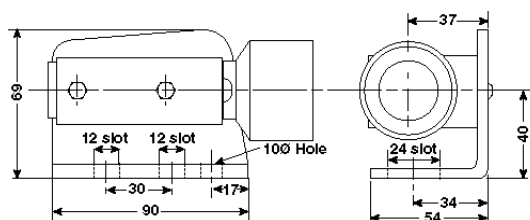
Tubular Spot Field of View Lenses



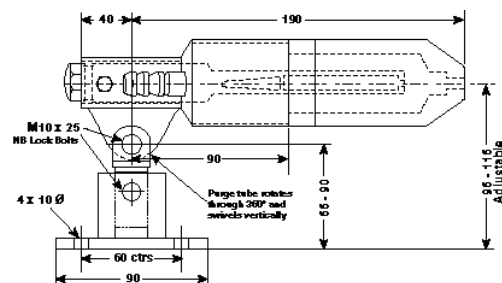
Length increases with narrower fields of view.



Stainless S2R Slit Lens

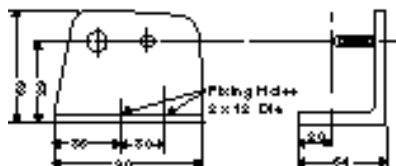


Quartz Q1 Lens Rod

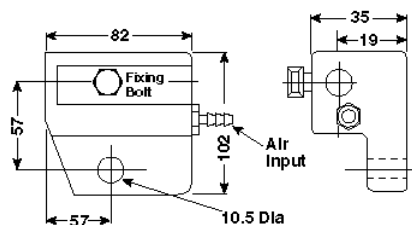


MOUNTING FACILITIES:

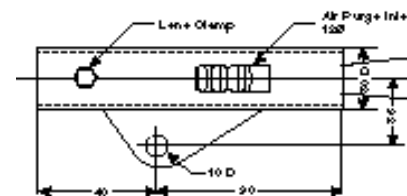
L Mounting Bracket Plated Steel



BPA-27 Purged/Cooled Aluminium Mounting Block

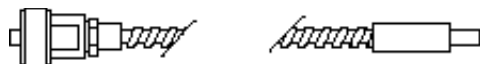


PST-07 Purged Stainless Mounting Nozzle

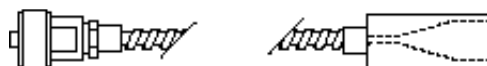


Optic Lead Selection

1. **Type LG-*—AB** Standard optic lead used in conjunction with 1°, 4° and 7° lenses.

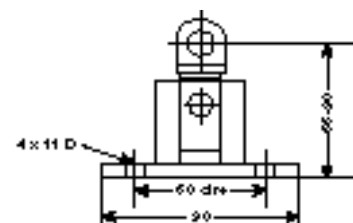


2. **Type LG-*—CB** Linearised fishtail optic for use with ½° x 25° lens. This construction ensures high accuracy and excellent sensitivity.



* Indicates optic lead length in metres (ie. LG-2—CB). Please refer to separate data sheet for information on lenses.

LSS-36 Universal Lift/Swivel Mounting Stand



Publication No: R8911/C

Moduloc® Controls Limited

Quadrant House, 235 High Street, London Colney, St. Albans, Herts. AL2 1HD
Tel: 44 (0)1727 821313 (2 lines) Fax: 44 (0)1727 826804

The information presented herein is, to the best of our knowledge, accurate. However, please ensure that this information has not been amended or superseded